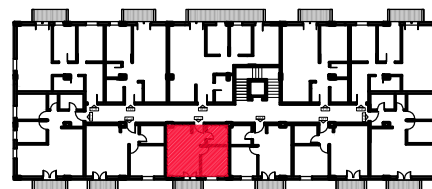


STAN 9		
BR.	NAMENA PROSTORUJE	POVRŠINA
9.1	Hodnik	2.70m <sup>2</sup>
9.2	Dnevna soba	10.46m <sup>2</sup>
9.3	Kuhinja	4.58m <sup>2</sup>
9.4	Soba	8.05m <sup>2</sup>
9.5	Kupatilo	4.16m <sup>2</sup>
9.6	Terasa	3.10 m <sup>2</sup>
UKUPNO STAN 9		33.05m <sup>2</sup>



tipski sprat i potkrovlje

**STAN 9**

**33.05m<sup>2</sup>**